





# Contents

For our second Installation Issue, we knew we had to go bold. Inside, you'll find 10 total restaurants, an office, an award-winning coffee shop, and even a distillery. You'll see expert and tantalizing use of upholstery, graphic tiles, lighting, art, and most importantly, color. Out of hundreds of gorgeous installations we were a part of in 2018 (and it was hard to choose), we hand-picked these spaces because their use of color; each space manages to tickle the senses, excite your palette, and create a genuine sense of energy.

So, if you're a fan of colorful, bold design, this installation guide is for you. We hope you enjoy.



ROSIE STOOL,  
starting list \$400





## Recess

DESIGNED BY: SQUARE FEET DESIGN

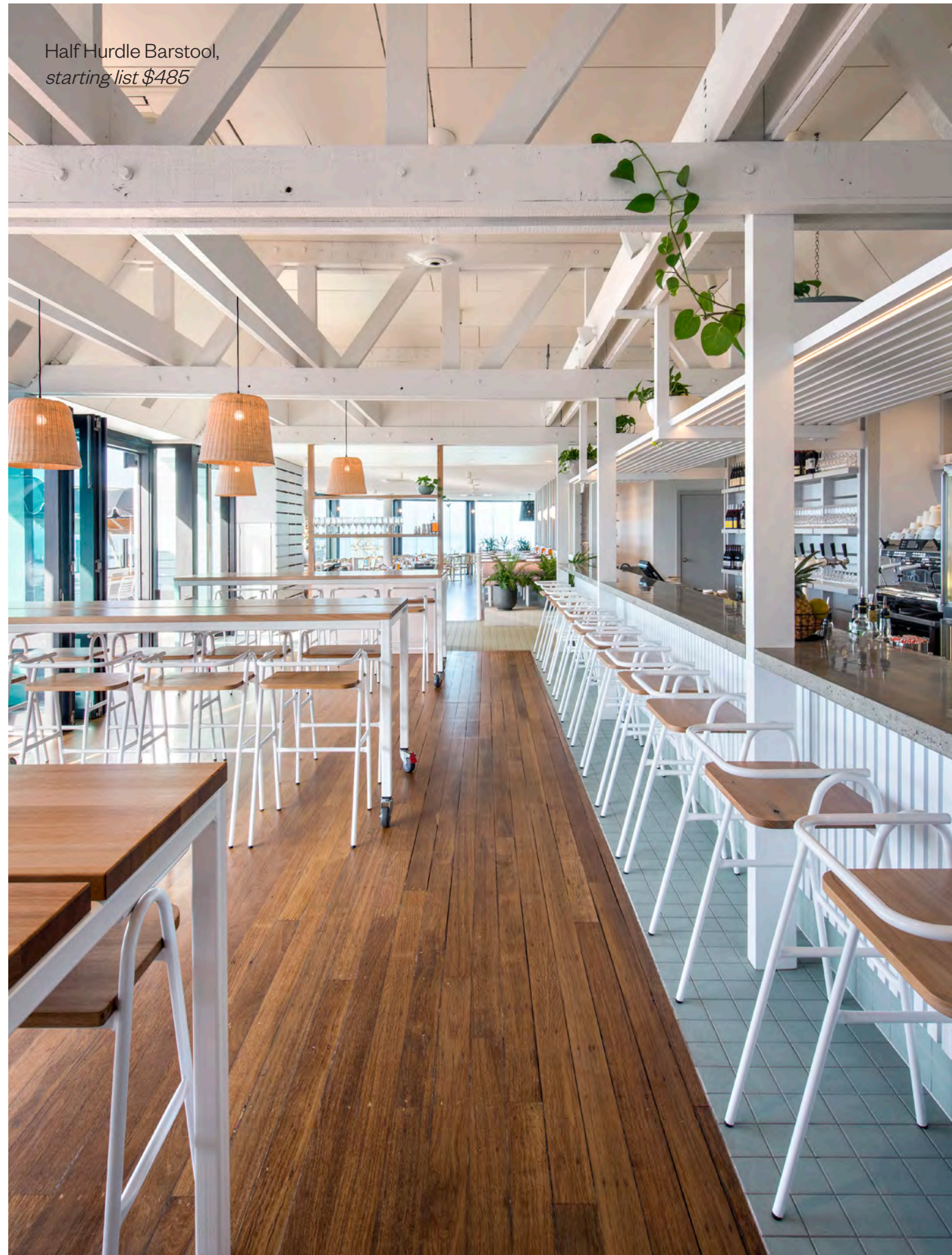
The coolest restaurant in Atlanta is not a restaurant. In fact, it's a small, 14-seat stall in Atlanta's popping Krog Street Market called Recess. Recess bursts with bright color and a healthy dose of modern art. Designed by Square Feet Design, Recess was inspired by the "vibrant and healthful California-style menu offerings, and the pop-art style of minimalist artist John Wesley." The veggie-centric food stall serves sandwiches, bowls, toasts, and even cocktails. It's a restaurant design that's so well executed, you may find yourself specifying bold and bright colors, too.

Images by: Katie Bricker Photography



Reece Barstool,  
starting list \$485





Half Hurdle Barstool,  
starting list \$485

## Melt

DESIGNED BY: STUDIO-GRAM

It's hard to say what we love more, good pizza or good restaurant design. But thanks to the third location of restaurateur Simon Kardachi's Melt Pizzeria, we don't have to choose. With room for almost 200 diners, the third location of Melt is by far their largest yet. Situated in a laid-back coastal suburb of Henley, this Aussie restaurant features stunning seaside views and a muted palette of colors and textures. Designers at Studio-Gram drew inspiration from the sea and sand to create an atmosphere that invites customers to relax and enjoy, successfully achieving a contemporary, beachy interior. Expansive openings allow natural light and a gentle breeze to sweep through the space, keeping things bright and airy. Perfectly placed plants, pink booths, sage green tiles, and crisp white Half Hurdle barstools offer a much needed respite from cliché seersucker and buoy-themed restaurants that plagued our childhood vacations to Florida.



Sir Burly Barstool,  
starting list \$595

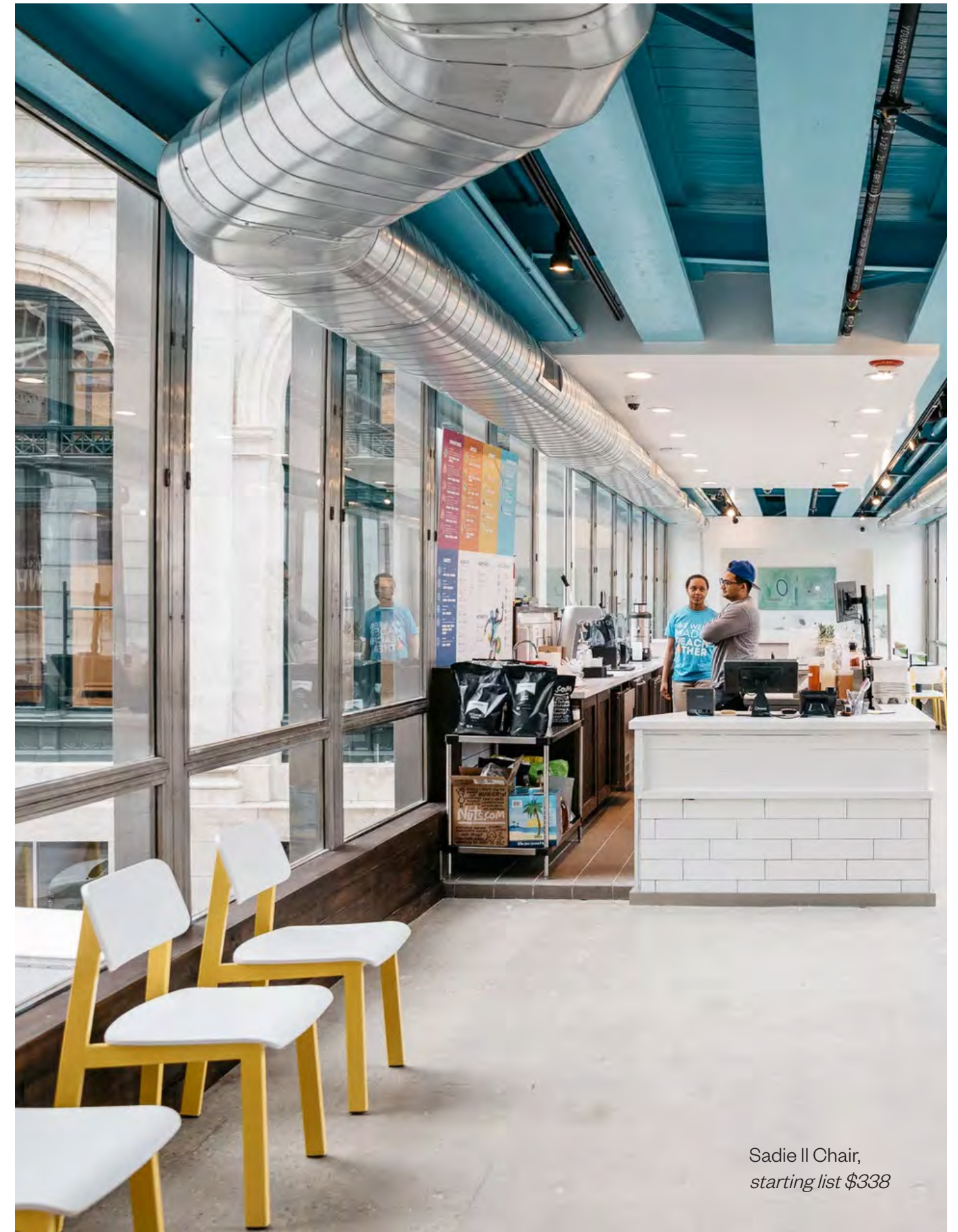


## Brome Modern Eatery & Balence

DESIGNED BY HALLARSAN GROUP

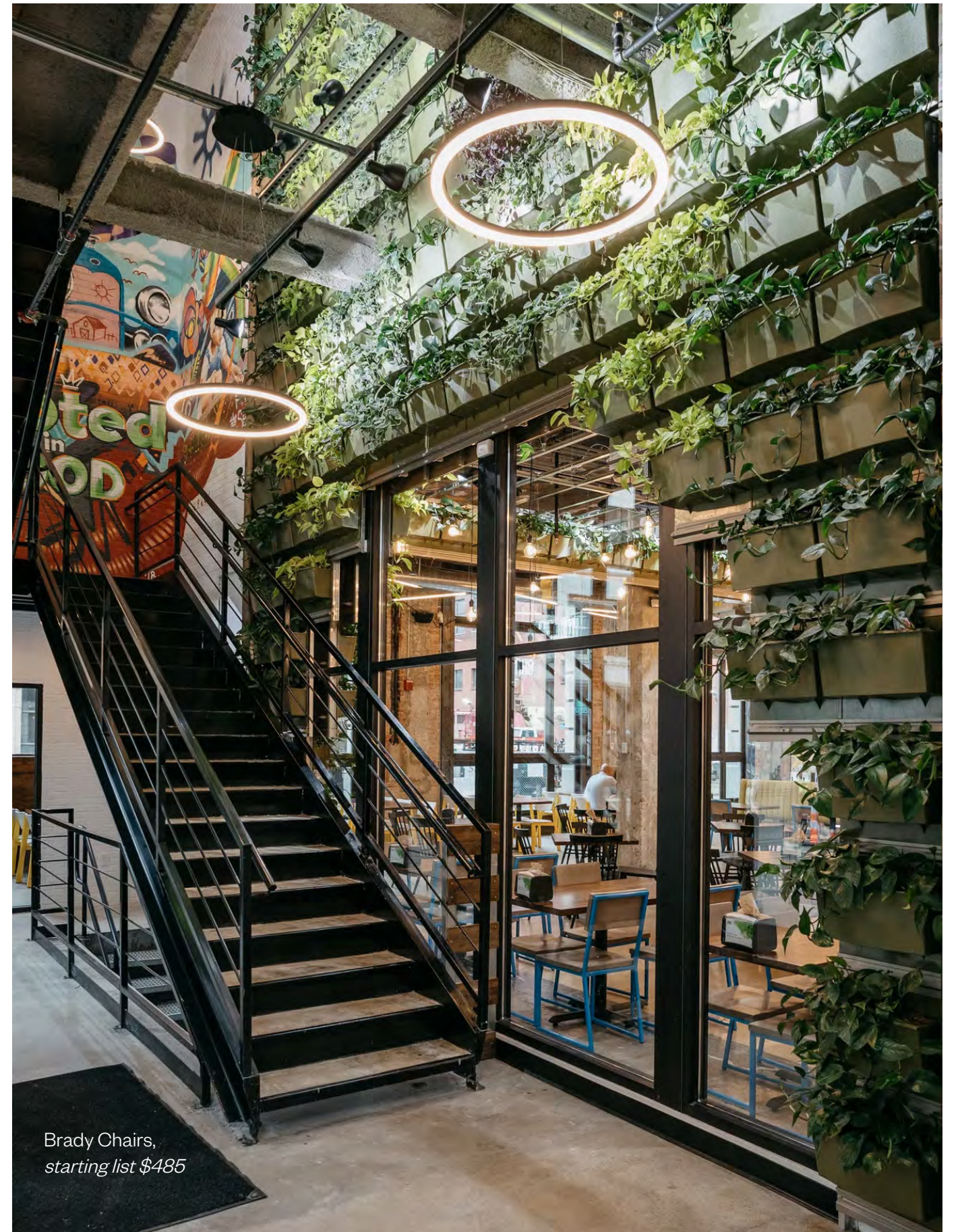
Tucked into the Financial District of downtown Detroit, enter Brome Modern Eatery & Balence. Brome is a multi-level burger and juice joint. This space has it all: a live plant wall, local artwork, and ample seating. But our favorite element can be found in the second-story juice bar called Balence.

Why? It's all about that view. White and yellow Sadie chairs perfectly contrast the blue and gray Detroit skyline. A juice with a view—what else do you need?



Sadie II Chair,  
starting list \$338









## Two Lights Seafood & Oyster

DESIGNED BY: NORTHWORKS ARCHITECTS & KEENE ADDINGTON

Two Lights Seafood & Oyster is like taking a vacation without ever leaving the city. Inspired by the owners' summer vacation in Maine, Two Lights was designed to make guests relax and reset (as so poignantly stated on their back wall). A delicate and calming color scheme—hello, mint Hugh chairs—and elegant materials successfully combine to create an oasis in the city.



Hugh Chair  
starting list \$400

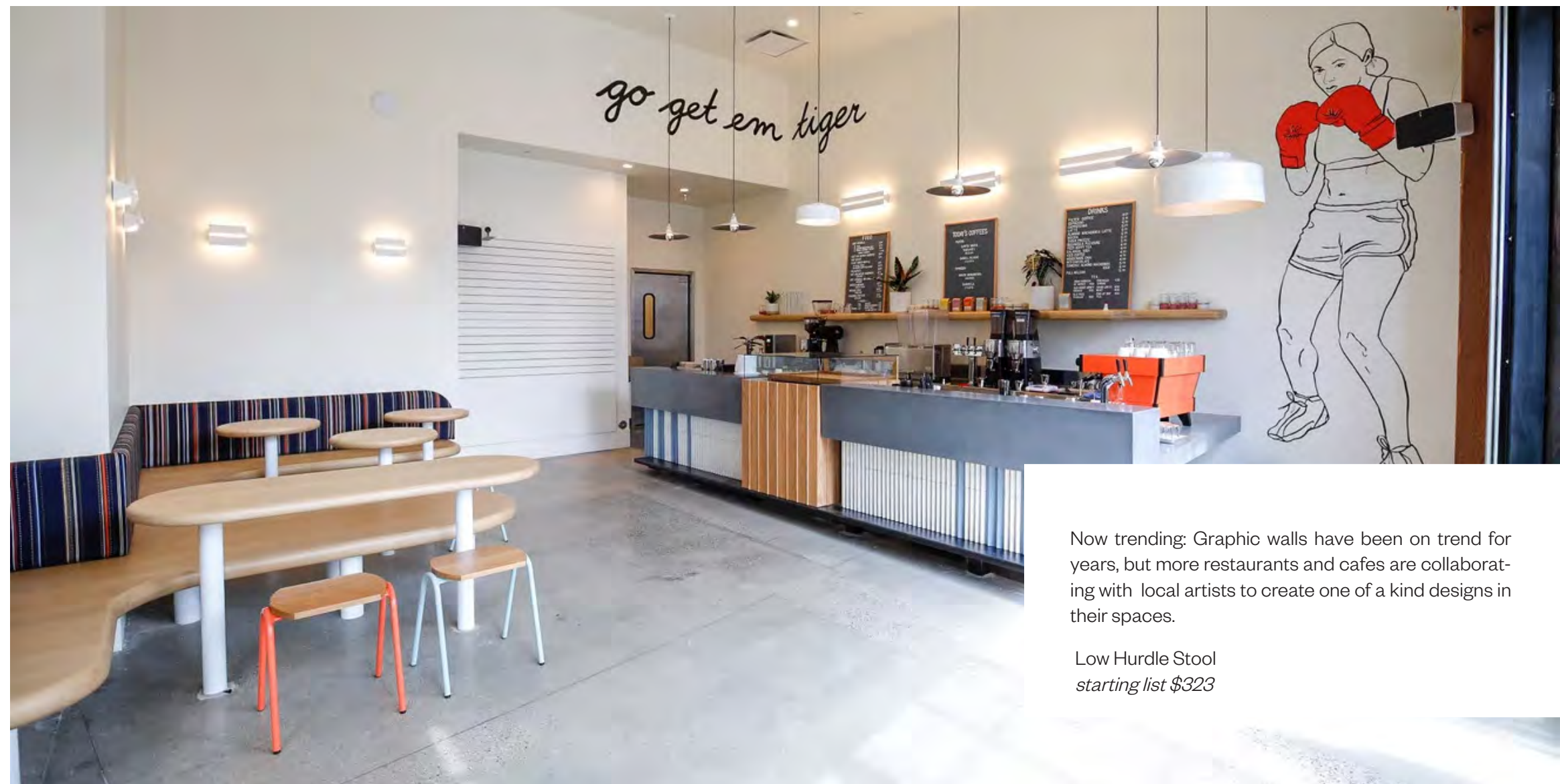




## Go Get 'Em Tiger

DESIGNED BY: GO GET 'EM TIGER

Need a pick-me-up? Look no further than Go Get 'Em Tiger, a micro coffee chain located in Los Angeles. A curved banquette and small tables provide seating while the design gets a one-two punch from the adorable orange and dusty blue Hurdle stools. It's the design and caffeine boost you've been looking for.



Now trending: Graphic walls have been on trend for years, but more restaurants and cafes are collaborating with local artists to create one of a kind designs in their spaces.

Low Hurdle Stool  
starting list \$323





Reece Chair,  
starting list \$485

## Brightwave

DESIGNED BY: OFFICE INTERIORS

Even the saddest sack lunch wouldn't feel so sad in this office cafeteria. Brightwave, named one of Atlanta's "Best Places to Work," boasts a fantastically bright and colorful lunchroom. Designers at Office Interiors played with citrus hues on Brady barstools and Reece chairs. The blue stripes add a nautical appeal.



Brady Barstool,  
starting list, \$500

Brady Communal Table,  
starting list, \$1098



## Gray Skies Distillery

DESIGNED BY: STEVE VANDER POL & BRANDON VORHEES

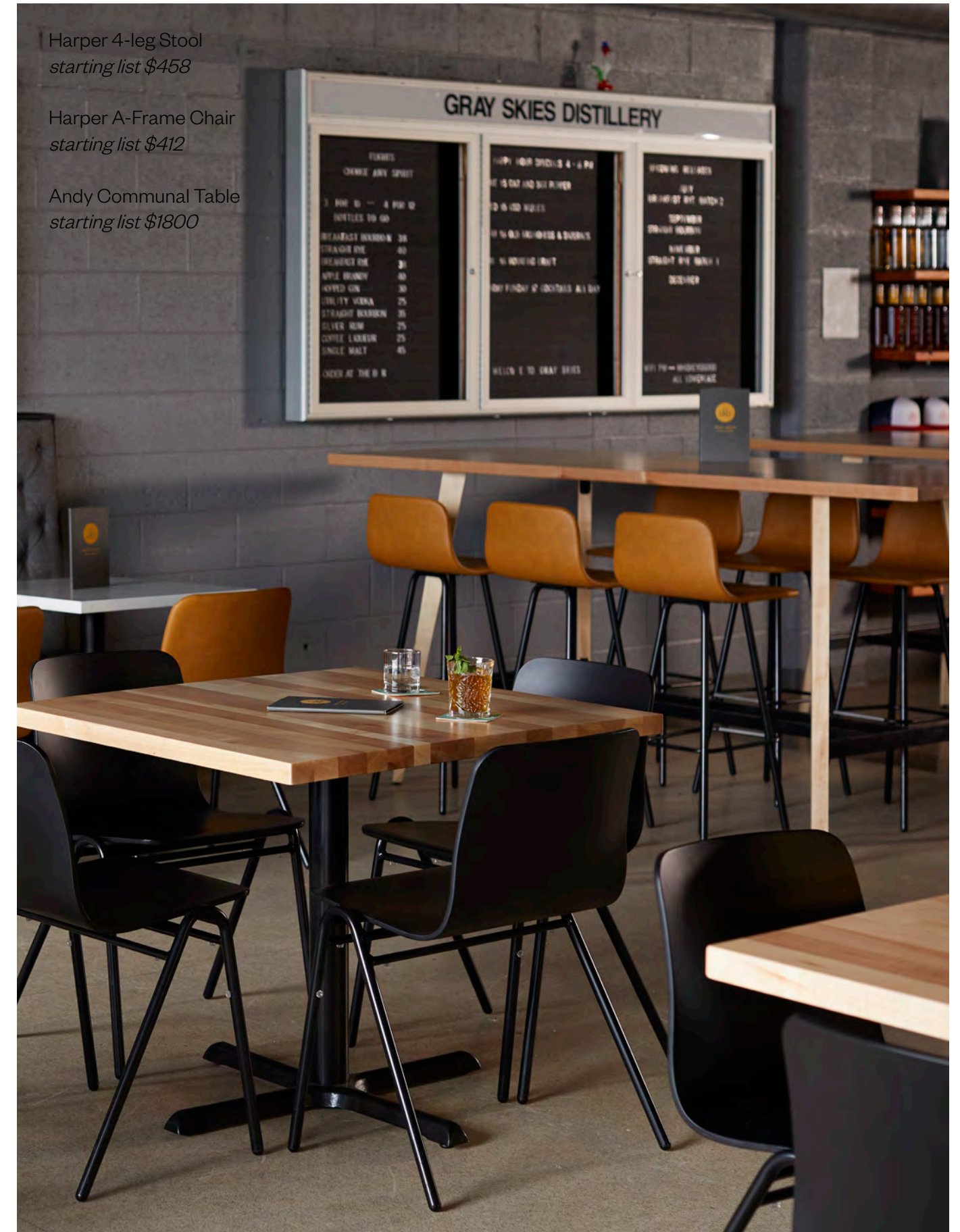
Are you team gin or team bourbon? Either way, this Grand Rapids craft distillery got a makeover—and we're honestly living for it. Leather Harper stools and chairs add a touch of luxury while white quartz tables and mid-century accents make the perfect backdrop for craft cocktails.

Images by: Dean Van Dis

Harper 4-leg Stool  
*starting list \$458*

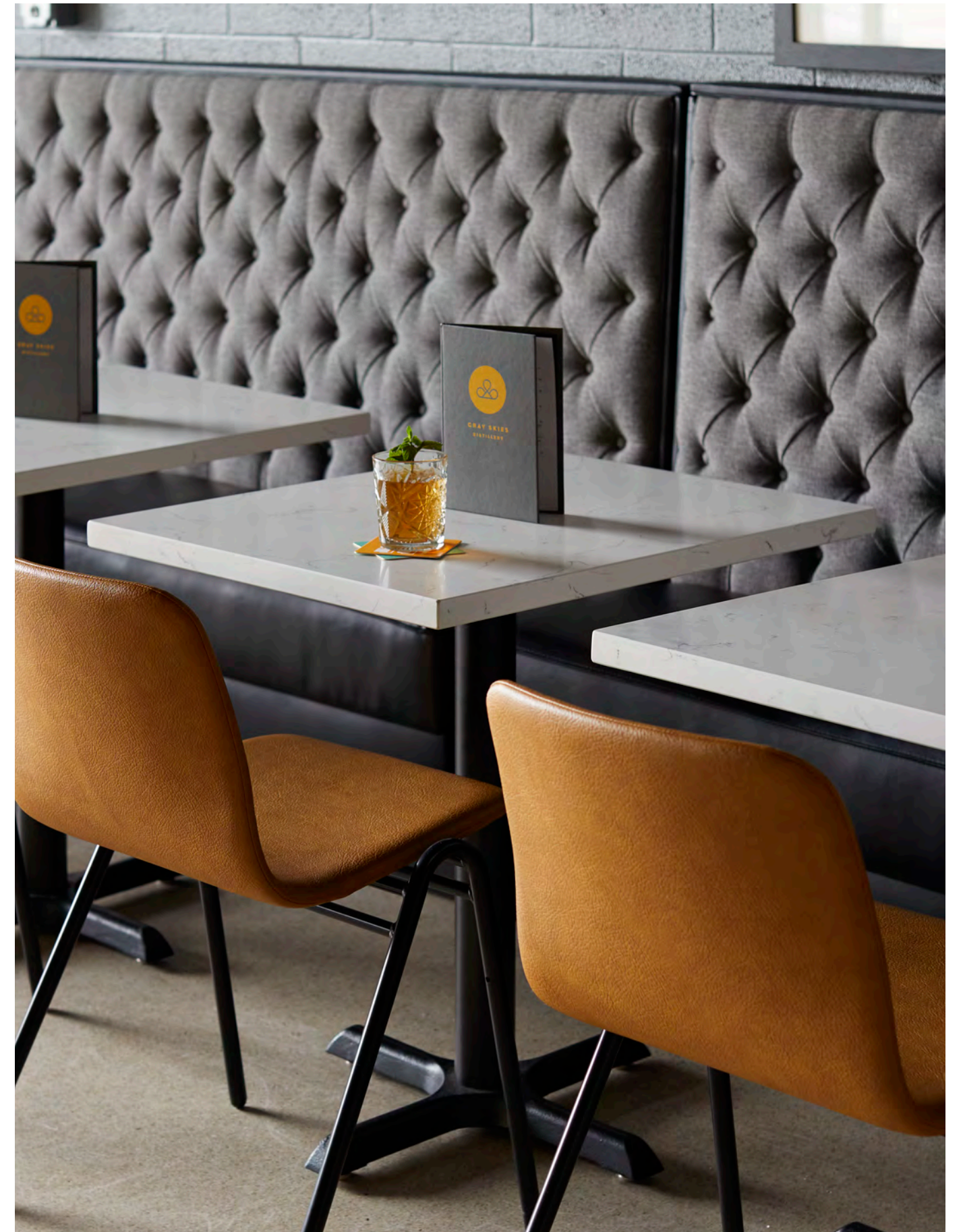
Harper A-Frame Chair  
*starting list \$412*

Andy Communal Table  
*starting list \$1800*





Harper A-Frame Chair  
starting list \$396





# The Royal Tern

DESIGNED BY: B. BERRY INTERIOR DESIGN

Located in Johns Island, South Carolina, the Royal Tern is as classic and charming as it gets. We'll admit, the colors are muted, but we adore the mix of mint, gray, and off-white Hugh chairs and booths.

Images by: Andrew Cebulka



Hugh Chair  
*starting list \$485*







## El Thrifty

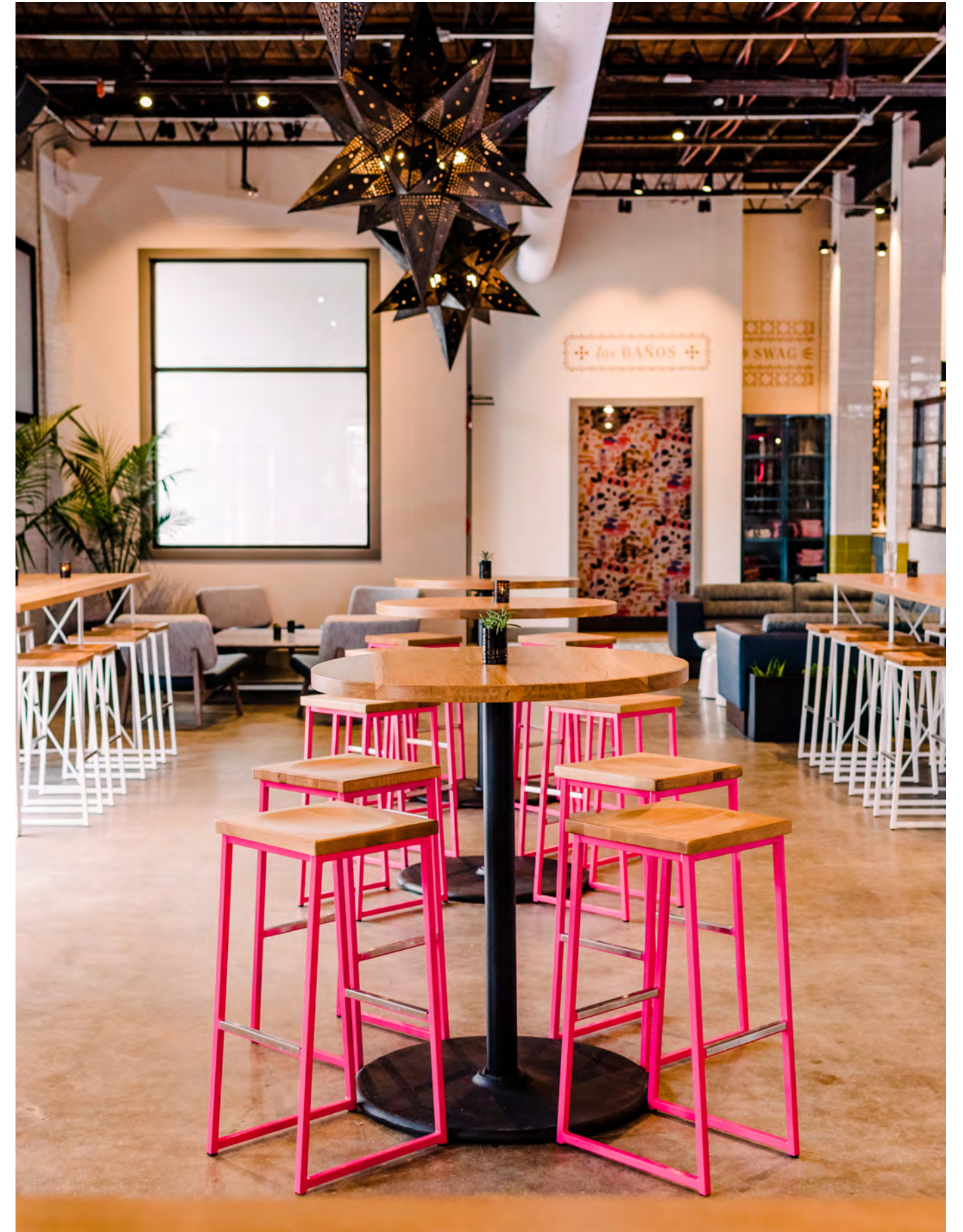
DESIGNED BY: B. BERRY INTERIORS

Good vibes only. Look no further than El Thrifty in Greenville, South Carolina is known for their casual, fun atmosphere—complete with air hockey tables, couches, and pool tables. El Thrifty is the perfect place to sip cocktails and chow down on queso. To match their playful ethos, El Thrifty uses a daring combination of hot pink and white Brady stools for their dining space that perfectly complement the modern Hurdle stools at the bar.

Games not your thing? No problem. El Thrifty also has lounge space perfect for casual conversations.

Right: Brady Backless Barstool,  
starting list \$405

Left: Hurdle Barstool,  
starting list: \$394





## Hibachi Daruma

FIRM: STUDIO GREY

From food truck to fast-casual brick-and-mortar, Hibachi Daruma is a Japanese-inspired fast casual resaturant that opened this year in downtown Minneapolis, MN. A soothing palette of greys, blacks, and natural wood leave space for the furniutre and the food to shine, but a deep accent of burgundy grounds the design.

Image by: Ashley Sullivan



Half Hurdle Chair  
starting list \$485

Brady Communal Table,  
starting list \$





Harper Lounge  
starting list \$595

# Coffee For Sasquatch

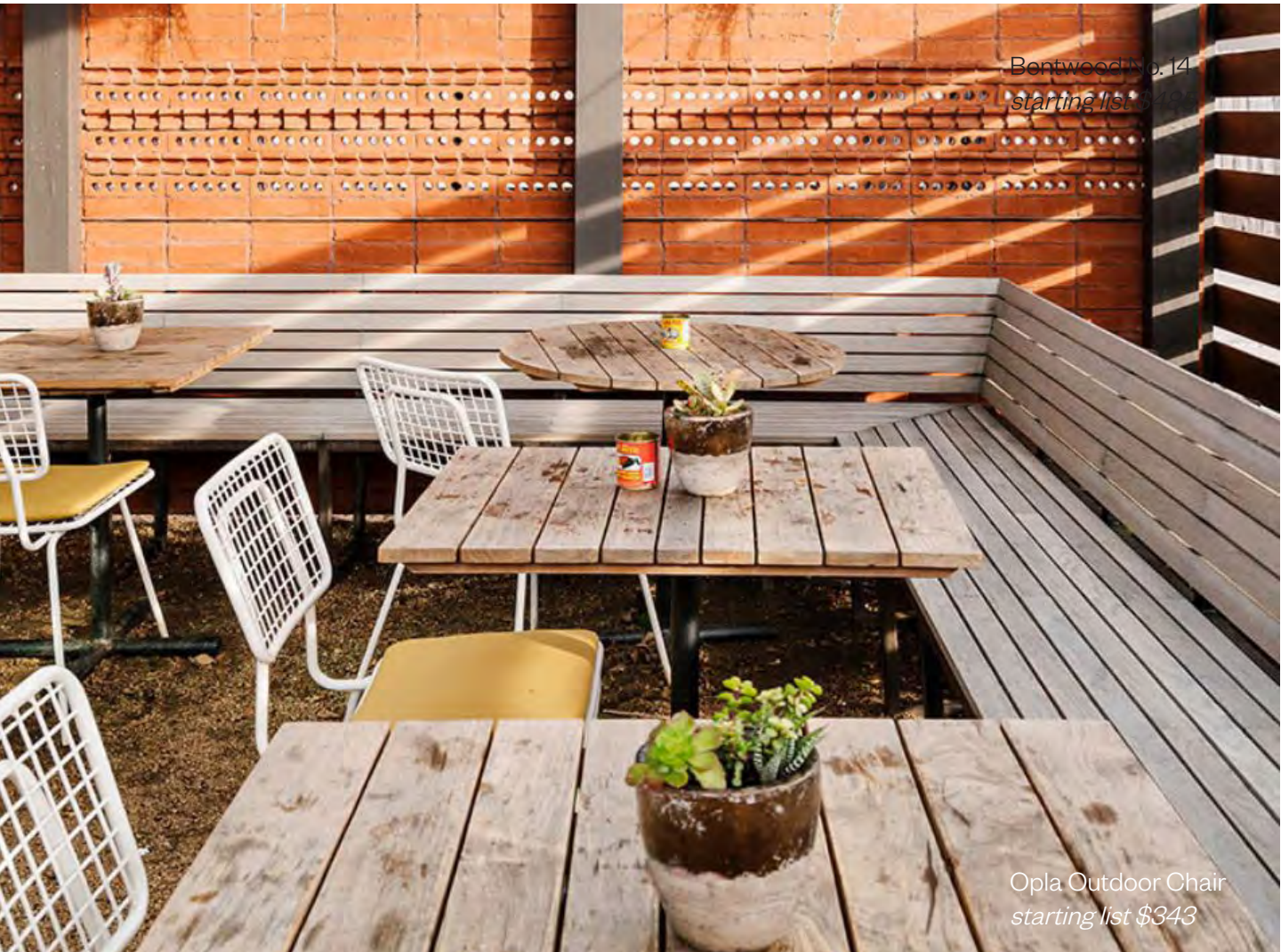
FIRM: DAN BRUNN ARCHITECTURE

Coffee for Sasquatch has made big waves in the design world. With the distinctions of 2017 honoree in Interior Design magazine and 2018 finalist in Architizer's Design Awards already under its belt, this hip Los Angeles coffee shop has made quite the name for itself. It's easy to see why: Coffee for Sasquatch strikes the perfect balance between natural and contemporary. Every element, from the custom-built terrazzo benches to the Harper Lounge chair to the vibrant living wall, is carefully placed to create a relaxing, stylish environment.

# Superica

FIRM: MICHAEL HSU OFFICE OF ARCHITECTURE

Driven by his passion of bringing people together through food, restaurateur Ford Fry seems to have the Midas touch when it comes to opening new restaurants. Superica, his elevated Tex-Mex concept, recently opened it's fourth location and captures the same warmth and attention to detail that Fry has become known for in the industry. The restaurant features an eclectic mix of furniture, blending styles and textures to create a lived-in feeling that's equal parts welcoming as it is theatrical. On the patio you'll find retro inspired outdoor seating in white with dijon colored seat pads. Image by: Chase Daniel



Bentwood No. 14  
starting list \$343

Opla Outdoor Chair  
starting list \$343





Leo Chair  
starting list \$400

## Whitebird

DESIGNED BY: GETTY'S GROUP

Located inside the uber chic and long awaited boutique hotel, The Edwin, Whitebird features a classic black and white palette mixed with luxurious details. Designed by The Getty's Group of Chicago, Whitebird is expertly layered with tasteful details. The space boasts tin ceilings, dark wide plank wood floors, charcoal wainscoting, and emerald green herringbone tile. Against alabaster walls, these classic elements feel fresh and light. It's classic without feeling austere. For furniture and fixtures, Getty's Group mixes classic with modern. Traditional solid wood round dining tables contrast the ultra modern white steel Leo chairs.





# Let's Stay In Touch

1250 84th Street SE, Byron Center, MI 49315  
Ph : 616-774-0561

GRAND RAPIDS CHAIR CO