





The forecast says color

Choose from our standard colors, explore the Color Finder Program, or share your own. Personalizing our products is easy and affordable.

| | | |
|--|--|---|
|  OCEAN BLUE RAL 5020 |  SKY BLUE |  DUSTY BLUE |
|  PALE GREEN RAL 6021 |  PASTEL GREEN RAL 6019 |  PASTEL TURQUOISE RAL 6034 |
|  SALMON ORANGE |  PASTEL YELLOW RAL 1034 |  BEIGE RED RAL 3012 |
|  TRAFFIC RED |  SIGNAL ORANGE |  ZINC YELLOW |
|  PASTEL VIOLET RAL 4009 |  INK BLACK |  GLOSS WHITE |



Opla Collection

Vibrant, modern, nostalgic, and versatile are just a few words that describe the Opla Collection. The modern seating collection is suitable for both indoor and outdoor use.



- Available:**
- Chair
 - Armchair
 - Counter Stool
 - Barstool
 - Optional seat pad

- Key Features:**
- Stacks 3 high
 - 5/8" round steel frame
 - Powder coated finish
 - Black plastic glides
 - 3-year structural warranty
 - Seat pad available, sold separately



Sadie II Collection

A modern outdoor collection for any design-savvy restaurant or bar. The Sadie II chair and barstool combines crisp angles with bold color options to deliver a fresh take on outdoor seating.



- Available:**
- Chair
 - Counter Stool
 - Barstool
- Available Tables:**
- 30" Round - dining height
 - 30" x 30" Square - dining height

- Key Features:**
- Tested to hold up to 350 lbs.
 - 18 gauge steel frame
 - Stainless steel seat
 - Plastic glides



Hula Collection

Just as the name implies, this eponymous outdoor collection features breezy perforated seat and back and a delightful hula-hoop-like shape.

Coming Soon - Collection Launching March 11, 2019



Available:

- Chair
- Counter Stool
- Barstool

Key Features:

- Stacks 3 high
- 5/8" round steel frame
- Powder coated finish
- Black plastic glides
- 3-year structural warranty



Opla Table Collection

The Opla Outdoor table features a powder coated steel frame and a 30" round or square perforated metal top. Finish the Opla table in any of our standard powder coat colors for an extra pop of color.



Available:
30" Round - dining height
30" x 30" Square - dining height

Key Features:
5/8" round steel frame
Perforated steel top
Powder coated finish
Black plastic glides
3-year structural warranty

Finishes and options

Metal

Tougher than conventional paint, our standard powder coating line brings your metal chair, barstool, or table base to life. Choose from 30 standard metal finishes.

Outdoor Upholstery

Our upholstery policy is simple; use nearly any upholstery materials you'd like or choose from our fabric partners. We hand-sew and hand-fit fabrics over high resilience foam for superior comfort, appearance, and durability.

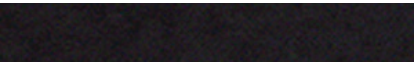
We recommend using outdoor grade fabrics for the Opla seat pad, be sure to check out the Sunbrella Contract collections from these partners:

Mayer Fabrics
Maharam
CF Stinson

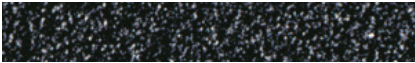
Standard metal finishes



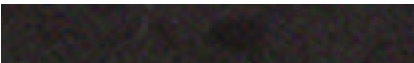
GLOSS WHITE



INK BLACK



BLACK WRINKLE



STACK BLACK



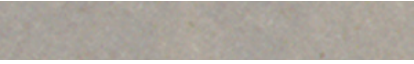
GRAPHITE



SATIN TEX



MIRROR SILVER



SATIN NICKEL



SPARKLE SILVER



GREY WHITE



PEBBLE



YELLOW GREEN



ZINC YELLOW



TRAFFIC RED



SALMON ORANGE



BROWN RED



COBALT



SKY BLUE



HONEY YELLOW



COPPER BROWN



OLIVE GREEN



CEMENT GREY



BURST RUST



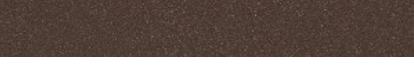
SIENNA



RUGGED BROWN



ULTRA BRONZE



SPECKLED BRONZE



HIGH GLOSS CLEAR COAT



LOW GLOSS CLEAR COAT

We're here to serve

American made

Building our products here gives us ultimate quality control, using the best American engineering and manufacturing techniques available today. Along with a highly advanced factory, we also employ master-welders and paint sprayers to build our outdoor products.

3-year outdoor warranty

We offer a standard 3 year structural warranty on all of our outdoor products, and a 1 year finish warranty.

BIFMA standards

Our products are designed and tested to meet BIFMA standards. Doing so ensures our products will perform and last in high-traffic environments. More importantly, BIFMA standards ensure our customers that their customers will be safe, minimizing any risk or product malfunction.
